



# FACT BOOK

20



CALIFORNIA STATE UNIVERSITY  
**BAKERSFIELD™**

25

# TABLE OF CONTENTS

4	Introduction
7	Colleges
10	Students
16	Community
19	Rankings



At California State University, Bakersfield, we are launching a new era of discovery, opportunity and excellence built upon this university's superpower:

## OUR STUDENTS.

There is a new energy in the air here in the heartland of California, and the rest of the country is taking notice. Our university is a perennial leader in the top tier of rankings for affordability and social mobility, which measures how far our graduates soar with a CSUB degree. Our excellence is directly connected to the brilliance of our faculty and supportive staff, who help our students work toward their dreams even before they take their first steps on campus.

The only thing missing from our campus is you.  
We invite you to join our thriving Roadrunner community today.

Invest in your future. Invest in CSUB.



– Dr. Vernon B. Harper Jr.  
President, California State University, Bakersfield





## INTRODUCTION

California State University, Bakersfield is dedicated to providing our students with the region's most transformative four-year university education. By helping our students develop their emerging skills and passions, our faculty and staff nurture one of the most powerful resources available to Kern County – the aspirations and innovations waiting in the minds of every person who dreams of a better future for us all.



**10,419**

Students



**TWO**

Campuses:  
Bakersfield and  
Antelope Valley



**67,000+**

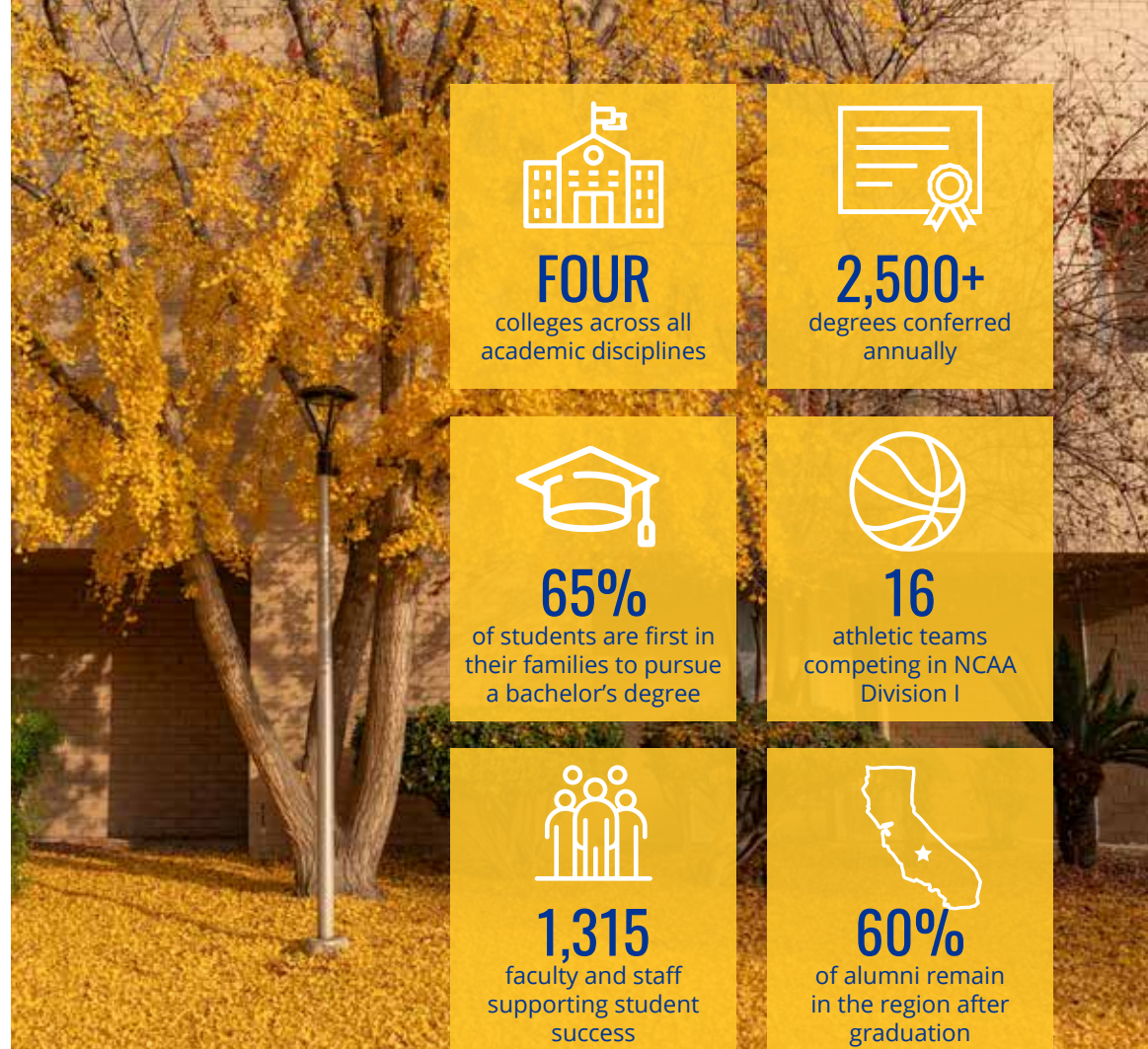
Alumni





# CSUB ...

- broke ground in 1965.
- held the first classes in 1970.
- offers 35 undergraduate majors, five education credential programs, 17 masters programs and two doctoral programs in educational leadership and nursing practice.
- is fully accredited by the Western Association of Schools and Colleges, Senior College and University Commission (WSCUC).
- is a designated Hispanic-Serving Institution.
- supports ongoing social, cultural and economic development in the region, with over 60% of graduates remaining to work in Kern County.
- is nationally recognized for affordability and social mobility.
- is the only public university within 90 miles.



## FOUR

colleges across all academic disciplines



## 2,500+

degrees conferred annually



## 65%

of students are first in their families to pursue a bachelor's degree



## 16

athletic teams competing in NCAA Division I



## 1,315

faculty and staff supporting student success



## 60%

of alumni remain in the region after graduation

# COLLEGES

## **Arts and Humanities - *Majors that matter.***

The College of Arts and Humanities provides students with broad artistic and humanistic knowledge while developing skills for a variety of professions. The college has seven departments and nine academic degree programs that host lectures, art exhibitions, dramatic productions and concerts for the university and the community. Arts and Humanities offers master's degree programs in English, Spanish and history. It also houses the Institute for Basque Studies, the Public History Institute and the Institute for Religion, Education and Public Policy.

## **Business and Public Administration - *Majors that mean business.***

The College of Business and Public Administration prepares students for careers through hands-on learning in current theory and practice. We offer bachelor's degree programs in agricultural business, economics, environmental resource management, public administration and business administration. In addition to the MBA, offered in person and online, we provide an MPA program and an MS in health care administration, all designed for working professionals. Accredited by AACSB and NASBA, BPA develops leaders ready to power the region's economy.

## **Natural Sciences, Mathematics and Engineering - *Majors that work.***

The College of Natural Sciences, Mathematics and Engineering provides exceptional science, technology, engineering, mathematics (STEM) and health science educational opportunities through transformative degree programs, cutting-edge research, personalized education and hands-on experiences provided by caring, dedicated faculty and staff. We are committed to serving the local community, being leaders in innovation, applying knowledge to real-world situations and providing a supportive learning environment where our students thrive and grow.

## **Social Sciences and Education - *Majors that make a difference.***

The College of Social Sciences and Education offers undergraduate, graduate, credential and professional degree programs that prepare students for careers in education professions, health and wellness, civic engagement, community advocacy, human and social services, law enforcement and legal professions. The college has forged strong partnerships with local school districts, criminal justice agencies, nonprofit groups and other organizations to enrich the quality of life in the region. Our students strive to improve their lives and those of others in their communities.







## STUDENTS

Fall 2024 Enrollment



BY LEVEL	COUNT	%
Freshmen	1,719	16.5%
Sophomore	1,163	11.2%
Junior	2,612	25.1%
Senior	3,298	31.6%
Graduate & Postbaccalaureate	1,627	15.6%
<b>Total</b>	<b>10,419</b>	<b>100%</b>

BY ETHNICITY	COUNT	%
Black/African American	439	4.2%
American Indian/Alaska Native	34	0.3%
Asian	637	6.1%
Hispanic/Latino	7,074	67.9%
International Student	129	1.2%
Native Hawaiian/Other Pacific Islander	17	0.2%
Two or More Races	240	2.3%
Unknown	470	4.5%
White	1,379	13.2%
<b>Total</b>	<b>10,419</b>	<b>100%</b>

BY AGE	COUNT	%
Under 18	1,218	3%
18–19	2,269	22%
20–21	2,309	22%
22–24	2,261	22%
25–29	1,500	14%
30–34	722	7%
35–39	430	4%
40–49	399	4%
50–64	154	1%
65 and over	22	0%
<b>Total</b>	<b>10,419</b>	<b>100%</b>

Note: The figures presented on this page may not sum to totals due to rounding.

“ My time at CSUB has been filled with many ups and downs. I’ve had hard days where I’ve had multiple assignments due while competing, and I’ve had good days that will always be a memory I keep throughout my life. The one thing that CSUB has taught me most of all is that you should always bet on yourself no matter the situation you are in. You hold the ability to do whatever it is that you are challenged to do, and being at CSUB has showed me that I am always the best person for any task ahead of me. ”

– **Jake Andrews**, Student Athlete







# STUDENT SUCCESS

## Academics

CSUB staff and faculty are passionate about providing a first-class education to our students that inspires them to enhance this region with their knowledge, innovative spirit and thirst for self-improvement. We provide a powerful selection of services and support that ensures each student has the resources they need to excel because we know that CSUB can provide them a vibrant future.

## Student Support

CSUB is a reflection of Kern County and the communities it serves. The university uplifts and supports students of all backgrounds through programs like the Veterans Success Center, Multicultural Alliance and Gender Equity Resource Center (MAGEC), the Basic Needs program, Dreamers Resource Center and Guardian Scholars Program.

## Extended Education and Global Outreach (EEGO)

EEGO offers online and hybrid bachelor's completion degrees, master's degrees and professional certificates to adult learners who want to improve their earning potential and have a more fulfilling life. EEGO is also home to the Study Abroad and Fulbright programs, which seek to enrich the university experience for main campus students.

## Sustainability

CSUB is focused on reducing waste, using energy efficiently, promoting green jobs and using water responsibly in pursuit of a more sustainable campus environment. We also offer ways for students experiencing food insecurity to get access to healthy food with options that include the Food Pantry as well as fruits and vegetables from the Edible Garden.

## Walter W. Stiern Library

The 150,000 square-foot Walter W. Stiern Library is the heart of CSUB, housing nearly a half-a-million volumes of learning. It provides electronic access to hundreds of thousands of periodical titles and over a million e-books in almost 200 databases. Faculty and staff have access to materials from across all 23 campuses of the California State University via OneSearch and CSU+.





California State University, Bakersfield is committed to building powerful partnerships with business, community and government organizations and leaders. Together we can enhance the region's economic power, boost the quality of life and enhance the future of our region. Our strategic partnerships, lectures, special events, artistic exhibitions and public service efforts give the community a powerful educational and social boost.



# COMMUNITY

## Pre-Admit Program

CSUB has partnered with middle schools and high schools to launch a program that automatically grants admission to the university to students who graduate from high school having met the academic requirements for college admission.

## Antelope Valley

CSUB Antelope Valley is a satellite campus in Lancaster, approximately 90 miles southeast of the main campus. It offers critical higher education opportunities in the region, allowing students to pursue bachelor's degrees, master's degrees or teaching credentials where they live and work.

## A Better Bakersfield and Boundless Kern (B3K)

CSUB is partnering with government agencies, the private sector and nonprofits to achieve inclusive growth and prosperity for our region.

## The Kern Education Pledge

CSUB has joined with 46 Kern County school districts and community college districts to form an unprecedented cradle-to-career education system that is already boosting local workforce development, innovation and economic growth.

## Kegley Institute of Ethics

The Kegley Institute of Ethics serves the community through ethics education, public lectures and events, training, research and teaching. KIE provides relevant, thought-provoking content that stimulates conversation and reflection throughout our region.

## Alumni

The majority of CSUB's more than 67,000 alumni remain in the region after graduation, empowering the local workforce. The `RunnerBridge network and the `Runner Alumni Mentor Program (RAMP) provide powerful ways for our alumni to stay connected to campus and our students by providing professional expertise, guidance and encouragement to current `Runners. These relationships create opportunities for our students to earn internships and careers after college.

## Community support empowers students to do original research, addressing important local questions and challenges with innovative insights and ideas.

The President's Associates program is the most prestigious and longest-standing giving society at CSUB. The contributions raised from generous community members are used to provide exceptional students with scholarships to conduct in-depth research projects as part of the Student Research Scholars Program.

Just a portion of the research being done by CSUB's Student Research Scholars:

- The effects of artificial light on the San Joaquin Kit Fox
- Access to medical care for individuals experiencing homelessness
- Microplastic pollution in aquarium-raised fish
- The history of Braceros in Kern County
- Exercise behavior in college students



“

The SRS program has given me a chance to pursue an enriching education that was beyond what I would have gotten in a standard university education, and in that way, has helped me reach goals that I thought were impossible for me. It's taken my education, it's expanded it and enriched it because of these opportunities that I get.

– Carmen Tomshack, Student Research Scholar

”





**5 Stars**  
Best Graduate Schools in America  
Money Magazine



**4.5 Stars**  
Best Colleges In America  
Money Magazine



**No. 4**  
California Mobility Index  
College Future Foundation



**No. 10**  
2024 Social Mobility Index  
CollegeNET



**No. 14**  
Best Bang for the Buck: West  
Washington Monthly



**No. 16**  
Top Public Schools: West  
U.S. News and World Report



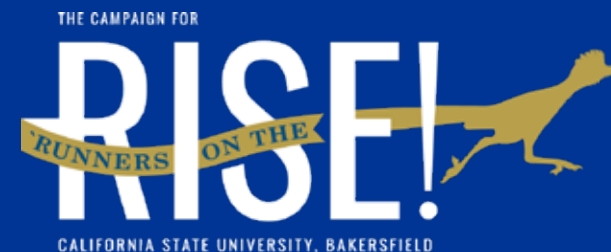
**No. 20**  
2023 Social Mobility Elevator  
Education Reform Now



**No. 20**  
Top 50 Most Affordable Colleges and  
Universities, University HQ



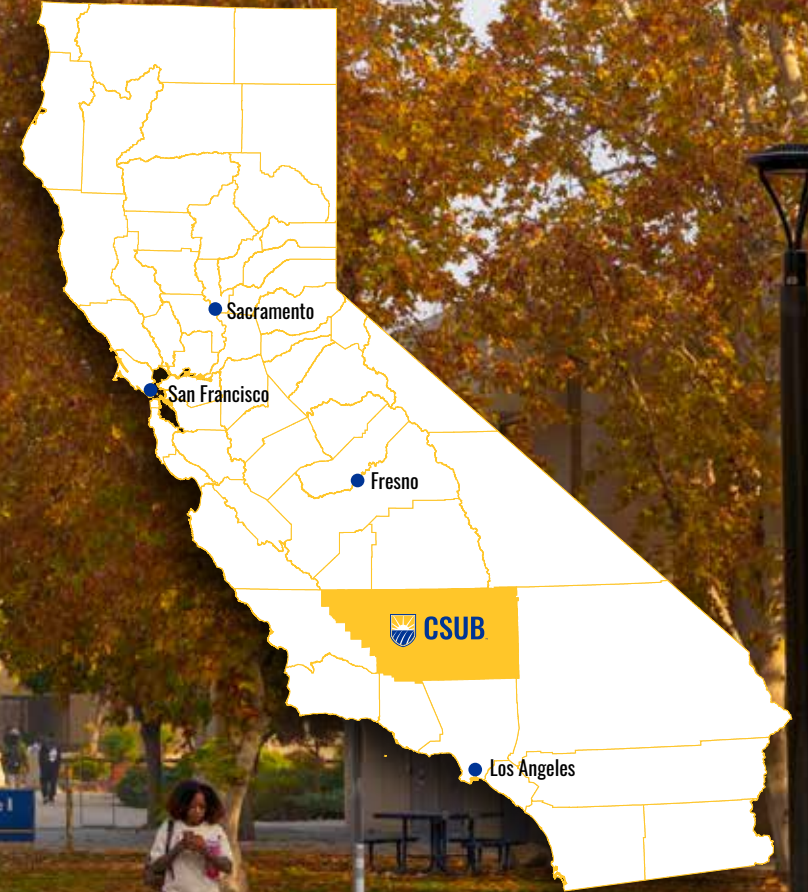
**No. 21**  
Top Performers on Social Mobility: West  
U.S. News and World Report



California State University, Bakersfield continues to distinguish itself for the way it empowers students' economic, social and professional growth with the support of generous community partners. Help CSUB continue this drive to new heights of student success as we work to complete the \$50 million capital campaign by July 2025 and transform the future of our region.

**Rise with us at [csub.edu/rise](https://csub.edu/rise)**

# WHERE WE ARE







CALIFORNIA STATE UNIVERSITY  
**BAKERSFIELD**

California State University, Bakersfield  
9001 Stockdale Hwy, Bakersfield, CA 93311

@csubakersfield



[www.csub.edu](http://www.csub.edu)